

# Walker River Irrigation District

---

WALKER RIVER ACCOUNTING TOOL IMPLEMENTATION  
OF 2019 STORED WATER PROGRAM



# Walker River Accounting Tool: SWP

---

## Schematic

### Storage PW Release and Loss Tracking

- Losses applied in each reach
- Handover to Lower Walker River Conveyance Protocol at Wabuska

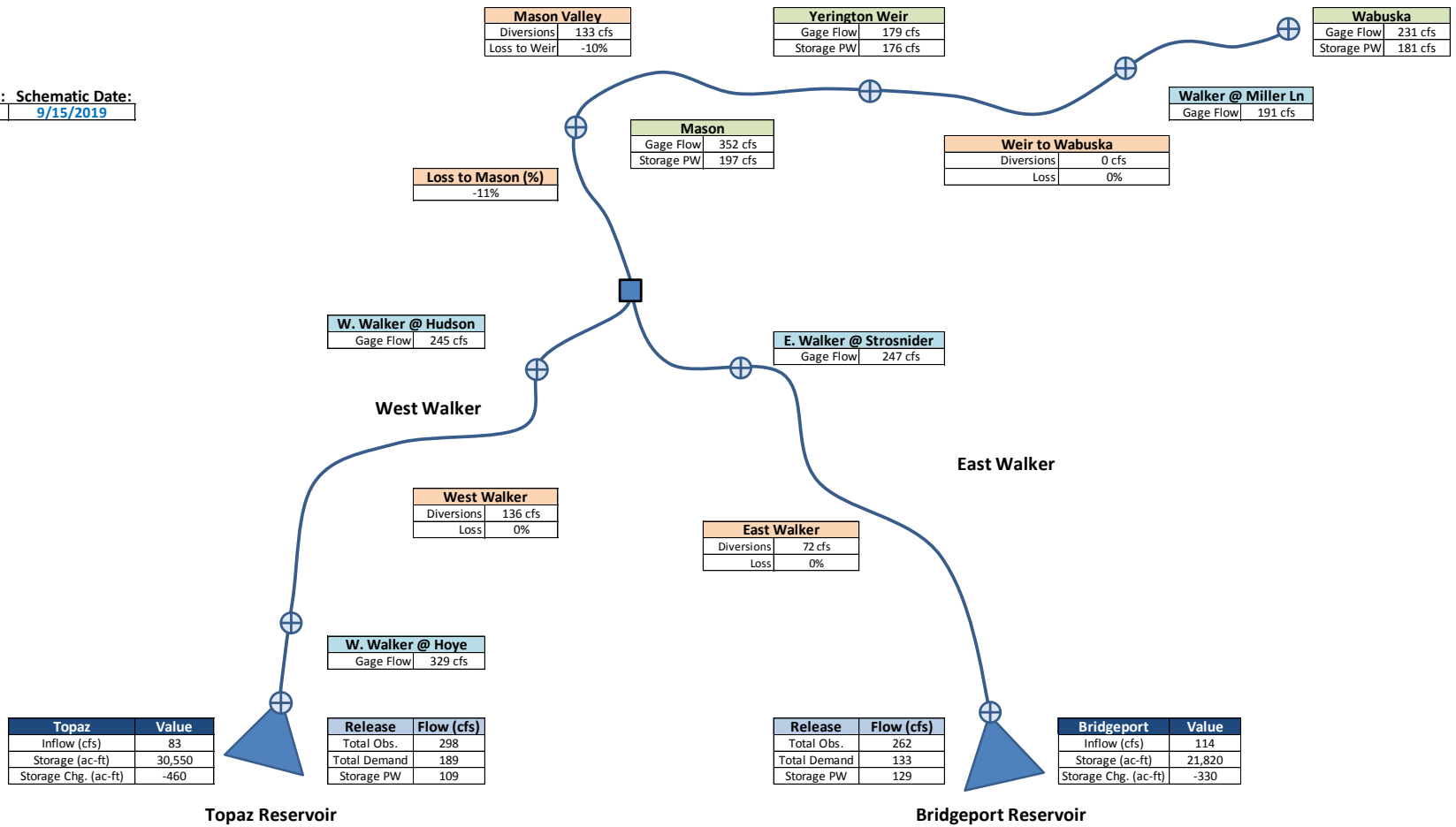
## Figures

- Reservoir Releases
- Cumulative Storage PW

Today's Date: 11/15/2019 Schematic Date: 9/15/2019

< Day Back

Day Ahead >



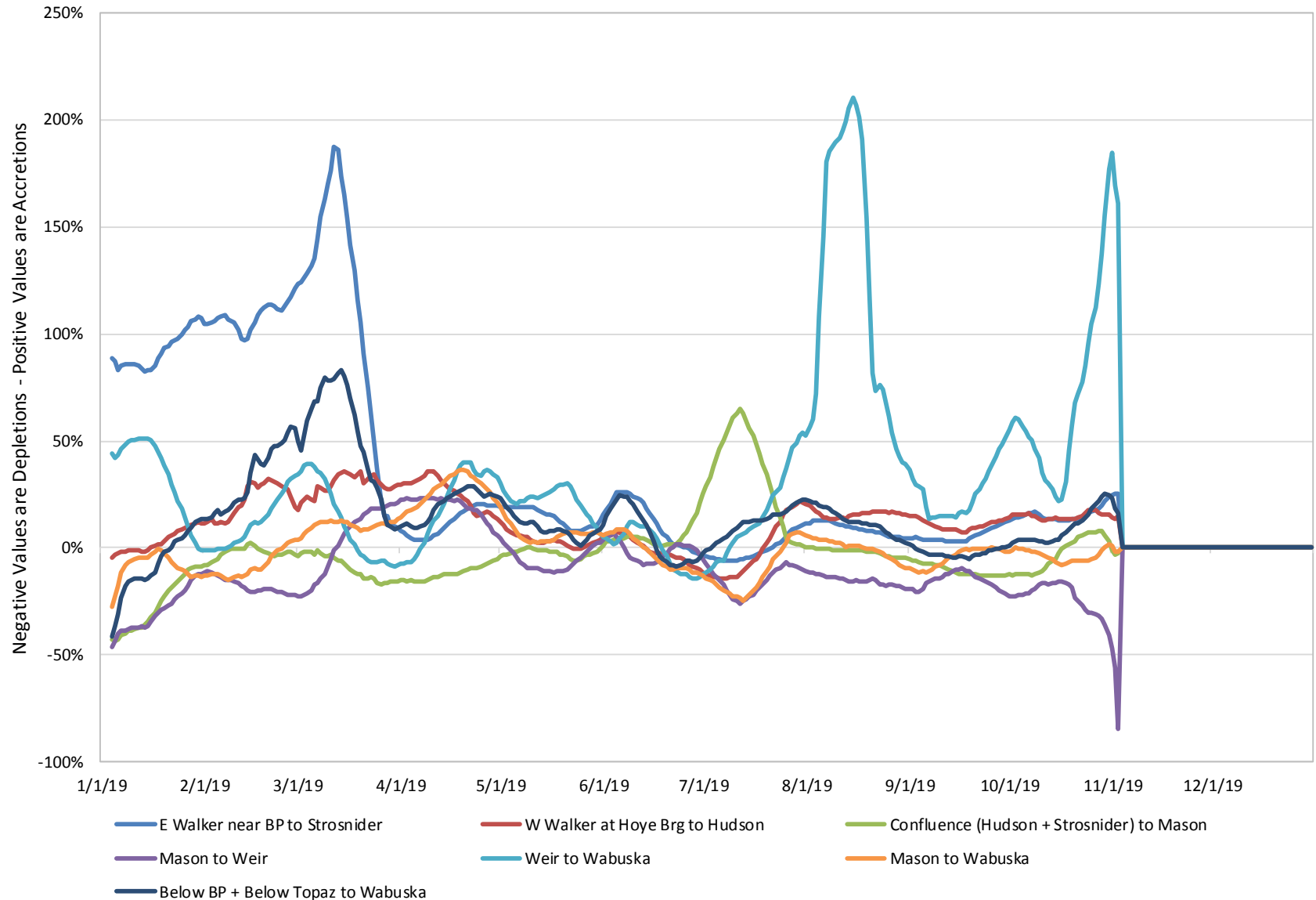
\*Schematic date represents operations and conditions throughout the system for that particular date. Downstream flows are subject to the following approximate travel times: Topaz to Mason = 2 days; Bridgeport to Mason = 2 days; Mason to Wabuska = 1 day  
 \*\*The release values shown in the table for each reservoir are determined by the 06:30 downstream gage reading on days without a release change or the daily average gage reading on days with a release change.  
 \*\*\*The information shown in this schematic is provisional and is based upon water order information provided to the District by others, and upon USGS Gage information which itself is provisional.

Schematic date represents operations and conditions throughout the system for that particular date. Downstream flows are subject to the following approximate travel times:

- Topaz to Mason = 2 days
- Bridgeport to Mason = 2 days
- Mason to Wabuska = 1 day

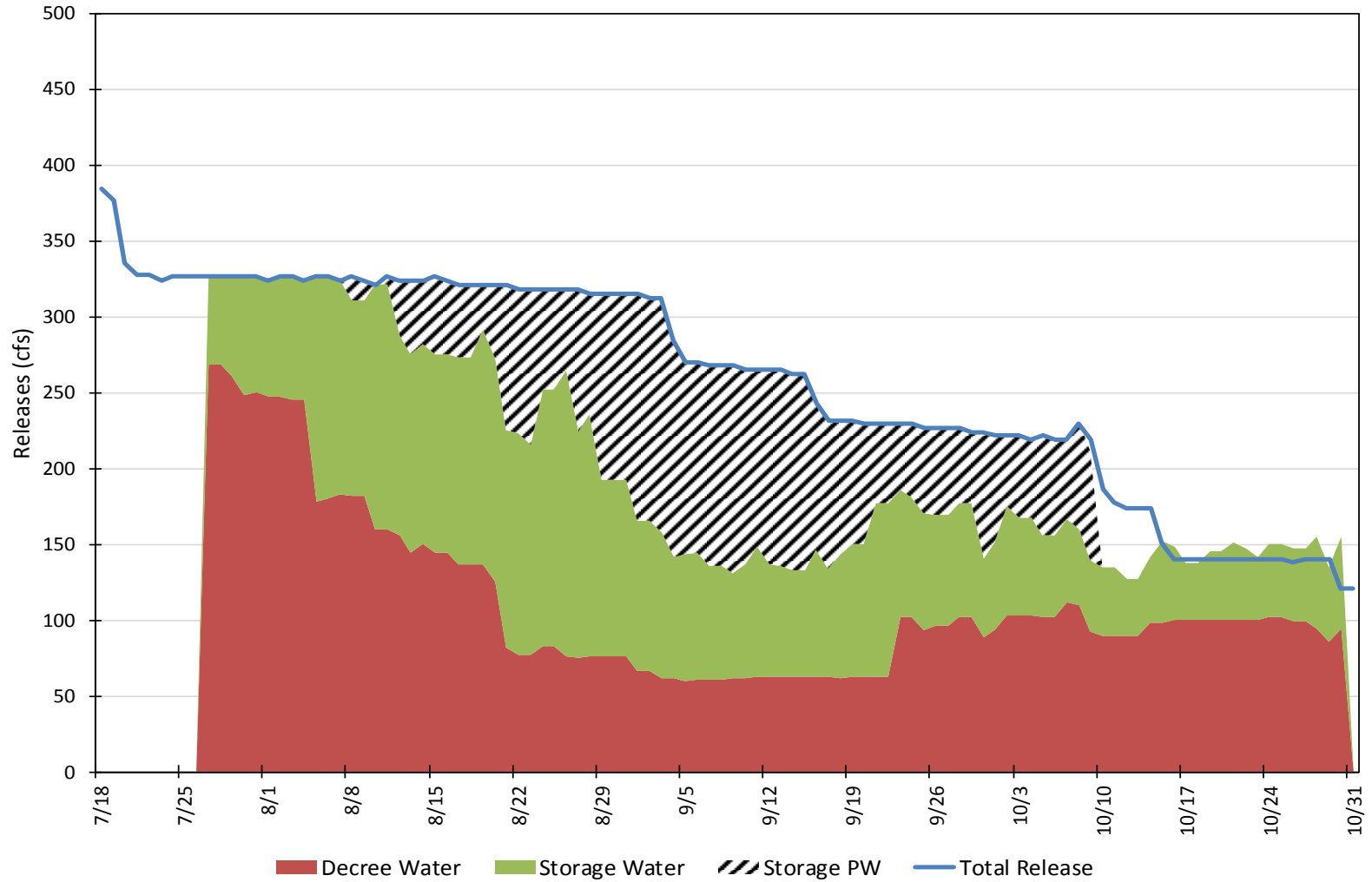
# 14-Day Average Basin Gain/Loss

## Lower Walker River Basin Accretions/Depletions



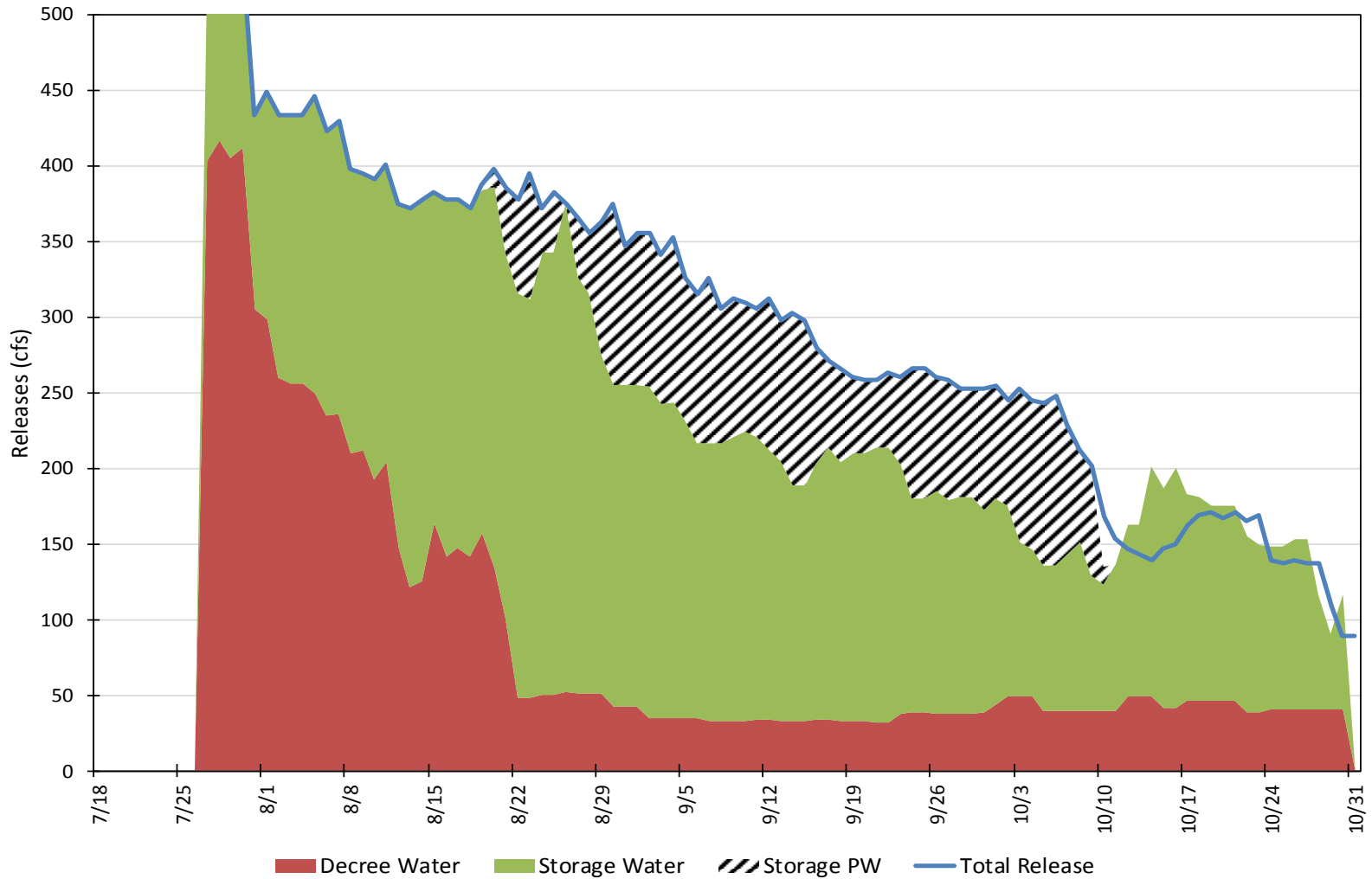
# Daily Releases

Total Bridgeport Release



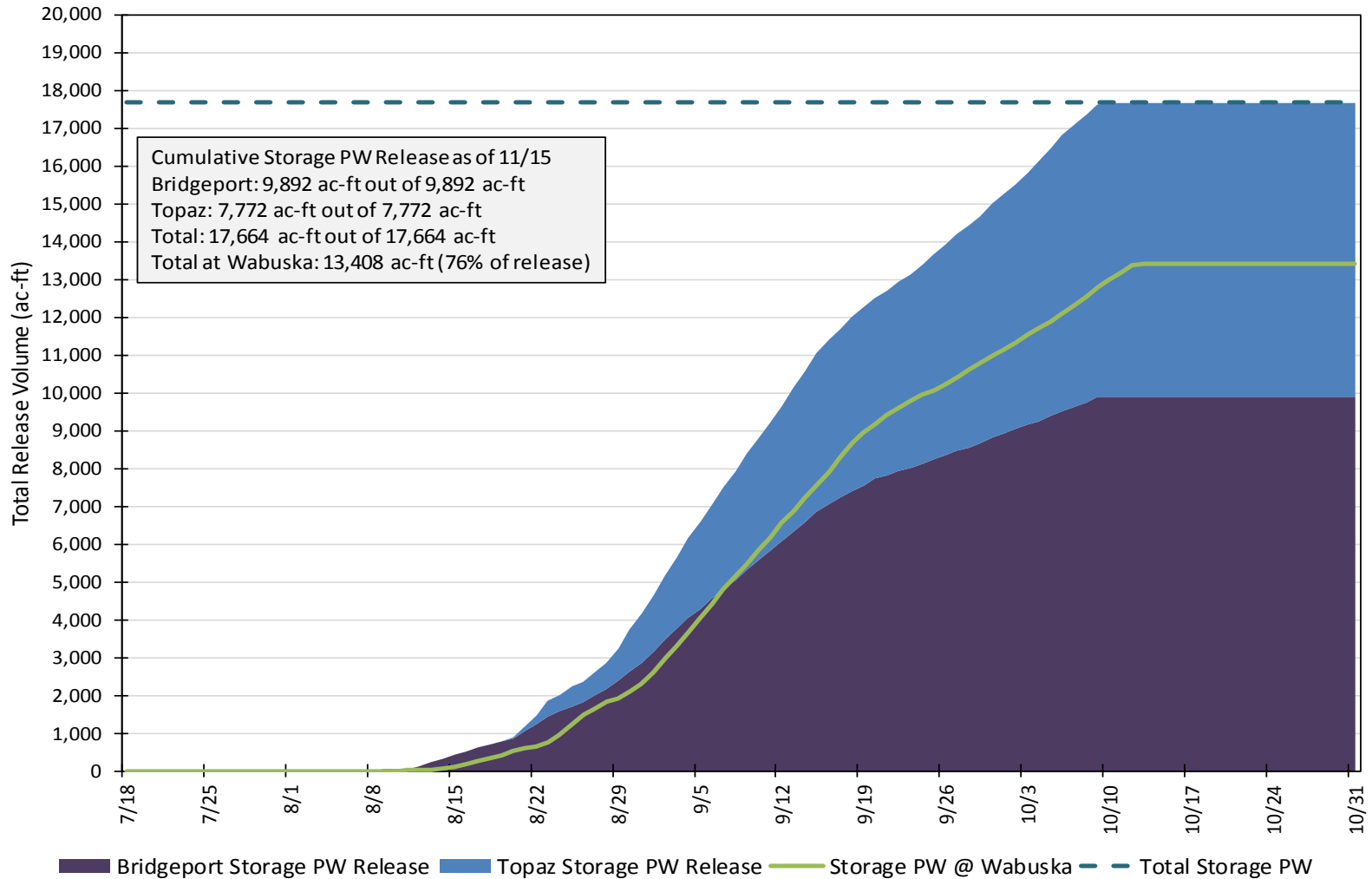
# Daily Releases

Total Topaz Release



# Cumulative Releases

## 2019 Stored Water Leasing Program Cumulative Releases



# Lessons Learned / Conclusions

---

Improved communication and coordination

Loss rates and river operations

Program release timing

Continued improvements/additions to Accounting Tool

Relatively complete data set for 2019 operations



# Questions?

---